

DISABILITY EMPLOYMENT SERVICES

-AN OVERVIEW



WDEA Works is a not-for-profit community organisation that helps people of all abilities to enhance their lives and achieve their employment goals



ABOUT US

WDEA Works is a not-for-profit community organisation that helps people of all abilities to enhance their lives and achieve their employment goals.

With more than 30 sites across Victoria and South Australia, WDEA Works engages with businesses, jobseekers and the community.

The organisation began in the late 1980s, after a group of community-minded people in the South West Victorian regional city of Warrnambool recognised the need within their area to provide more opportunity for people with a disability to access open employment.

Today, WDEA Works delivers a range of complimentary programs and services aimed at helping people of all abilities to enhance their lives and achieve their employment goals. This includes:

- Disability Employment Services
- jobactive
- Supported Employment Enterprises

WHAT WE DO

Disability Employment Services provides specialist employment support to help people with disability, injury or a health condition to find and retain suitable employment in the open labour market.

We support those referred to our organisation to build their capacity for work, as well as help them to find and keep a job that suits their needs and best-utilises their skills, knowledge and experience.

WDEA Works also works with local support services to build clients' skills and address any barriers to employment.

This collaborative approach helps to lead clients towards independent employment, involving a wide and strong network of relevant and active support services and local stakeholders to provide comprehensive support to enhance lives and achieve employment goals.

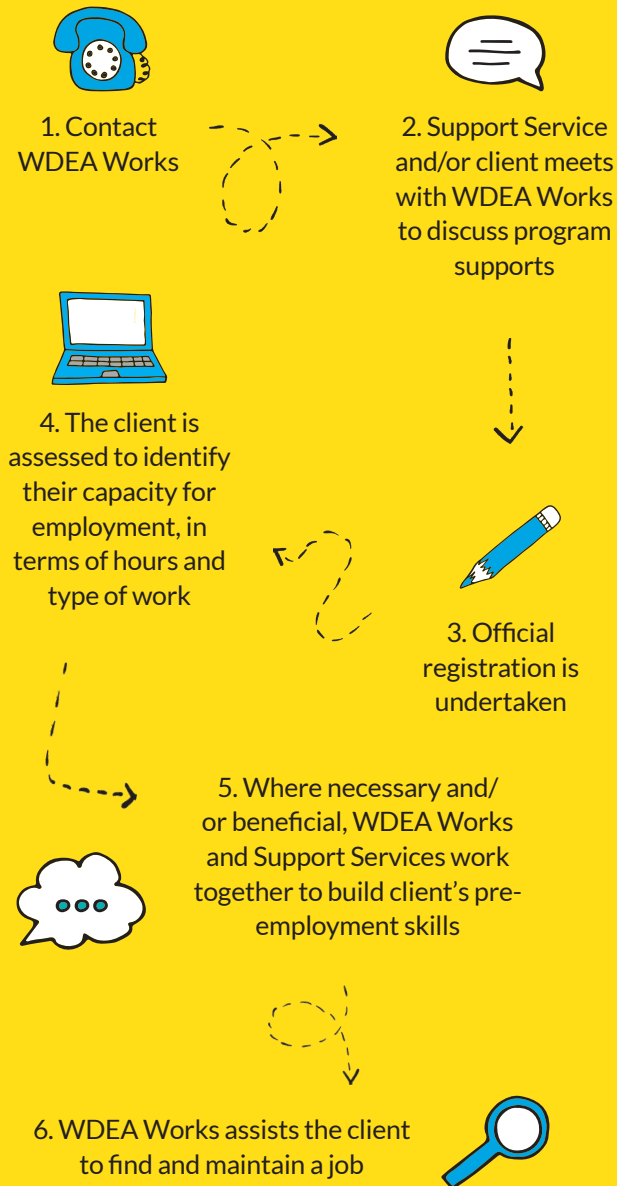
wdeaworks
Unlocking potential. Building ability.

wdeaworks.org.au 1300 521 511

 Disability™
Employment
Services

AN AUSTRALIAN GOVERNMENT INITIATIVE

HOW IT WORKS



HOW WE CAN HELP

WDEA Works offers clients:

- Tailored support and individually-prepared job planning to identify and obtain employment that meets a client's needs and interests
- Specialised assistance in how to prepare for a return to the work place and further develop existing skills, or address skills gaps
- Guidance to canvas and negotiate employment positions
- Advocacy in relation to employment conditions
- Employer incentives, including financial subsidies to help alleviate the costs of additional training and mentoring for new staff
- Adaptive equipment for the workplace
- Training where required in workplace and lifestyle skills
- Ongoing workplace support

WHO CAN BENEFIT

WDEA Works will work with people who:

- Are aged between 15 and 65 years
- Have a disability, injury or health condition
- Are assessed as being able to work eight or more hours per week in open employment
- Are not already working at their assessed work capacity
- Are Australian residents

MORE QUESTIONS?

Contact your local WDEA Works Disability Employment Services team:

Ararat
68 High St Ararat 3377
Phone (03) 5352 3611
ararat@wdeaworks.org.au

Ballarat
219 Mair St Ballarat 3350
Phone (03) 5331 6566
ballarat@wdeaworks.org.au

Bendigo
14 King St Bendigo 3550
Phone (03) 4400 9777
bendigo@wdeaworks.org.au

Castlemaine
161 Barker St Castlemaine 3450
Phone (03) 5462 5252
castlemaine@wdeaworks.org.au

Colac
178 Murray Street Colac 3250
Phone (03) 5231 3411
colac@wdeaworks.org.au

Corio (Corio Central)
Bacchus Marsh Rd Corio 3124
Phone (03) 5292 1640
corio@wdeaworks.org.au

Geelong
37 Malop St Geelong 3220
Phone (03) 5292 1640
geelong@wdeaworks.org.au

Hamilton
82 Brown St Hamilton 3300
Phone (03) 5571 2443
hamilton@wdeaworks.org.au

Horsham
31 Wilson St Horsham 3400
Phone (03) 5382 6100
horsham@wdeaworks.org.au

Maryborough
87 Napier St Maryborough 3465
Phone (03) 4410 7060
maryborough@wdeaworks.org.au

Mildura
138 Lime Avenue Mildura 3500
Phone (03) 5065 3050
mildura@wdeaworks.org.au

Mount Gambier
2 Mitchell St Mt Gambier 5290 SA
Phone (08) 8707 9920
mtgambier@wdeaworks.org.au

Portland
35 Bentinck St Portland 3305
Phone (03) 5521 7959
portland@wdeaworks.org.au

Shepparton
74 Wyndham St Shepparton 3630
Phone (03) 5899 9101
shepparton@wdeaworks.org.au

Stawell
152 Main St Stawell 3380
Phone (03) 5358 2799
stawell@wdeaworks.org.au

Swan Hill
118 Curlewis St Swan Hill 3585
Phone (03) 4026 0010
swanhill@wdeaworks.org.au

Warrnambool (Head Office)
52 Fairy St Warrnambool 3280
Phone (03) 5561 2579
warrnambool@wdeaworks.org.au